



RFE

MAKING  
BROADCAST  
SMARTER

# N+1 Automatic Change Over Unit

XC-02 ~ XC-06





# N+1 Automatic Change Over Unit



## PRODUCT DESCRIPTION

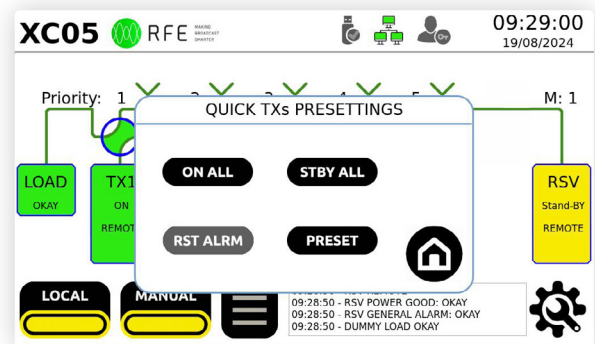
XC-Series is an Automatic Changeover Unit for N+1 Transmitters system management.

It can be factory configured from 2+1 [XC-02] up to 6+1 [XC-06]. An example of 5+1 configuration [XC-05] is shown in the figure above.

The system monitors the transmitters and, in case of fault of one of the Main Transmitters, replaces it with the Reserve one.

## MAIN FEATURES

- 7" color display with touch control and user friendly interface
- Handling Linux based
- Compact main page with synoptic of the N+1 system
- Priority management
- Software update via USB-stick and remotely
- Management via SNMPV2 and integrated Web-server
- Micro UPS on-board
- Quick menu for quick settings [QMQS]





<b>GENERAL</b>	<b>Transmitter System Configuration</b>	from 2+1 to 6+1
	<b>Operation Mode</b>	AUTOMATIC or MANUAL
	<b>Control Mode</b>	LOCAL or REMOTE
	<b>Switching Delay</b>	adjustable from 2 to 60 sec
	<b>Reset Failure</b>	Manual
	<b>External Interlock</b>	Configurable N.O. or N.C.
	<b>Compatible with most common Coaxial Switch</b>	ask for specific Control Cable
<b>AUDIO/CONTROL</b>	<b>L/R input</b>	2 XLR Female connectors
	<b>L/R output</b>	2 XLR Male connectors
	<b>MPX/SCA/9kHz Input</b>	4 BNC Female connectors
	<b>MPX/SCA/9kHz Output</b>	4 BNC Female connectors
	<b>TX Control Interface</b>	DB9 Female connector
	<b>RF COAX Interface</b>	DB9 Male connector
	<b>TX RESERVE interface</b>	DB25 Female connector
	<b>LAN</b>	RJ45 connector
	<b>Firmware Upgrade</b>	USB-A connector / LAN RJ45 connector
	<b>Remote I/O</b>	DB25 Female connector
<b>ELECTRICAL</b>	<b>AC Input Power</b>	90÷260 VAC 50/60Hz single phase
	<b>Power Consumption</b>	60VA
<b>ENVIRONMENTAL</b>	<b>Operating temperature</b>	-10°C to +50°C
	<b>Max Operating Altitude</b>	4500 mt
	<b>Relative Humidity Range</b>	0 to 90%
<b>PHYSICAL DIMENSION</b>	<b>Mounting</b>	Standard 19" chassis 4U rack
	<b>Size</b>	Wx483 mm. Dx470 mm. Hx176 mm
	<b>Weight</b>	3 Kg

